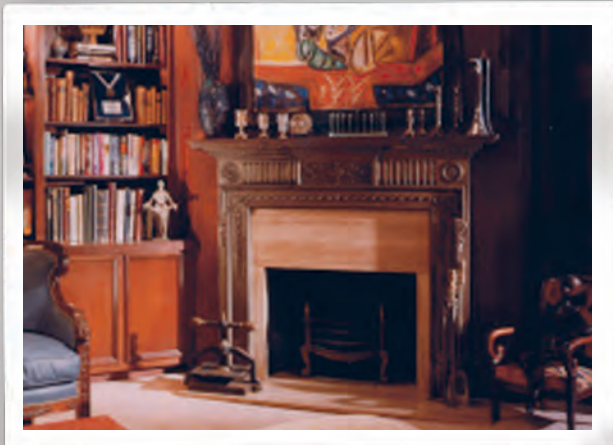


FireRock

The fireplace, rekindled.
www.firerock.us

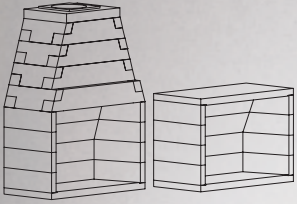


PRECISION-ENGINEERED

MASONRY FIREPLACES

Indoor Products

ADD BEAUTY AND COMFORT TO ANY ROOM IN YOUR HOME



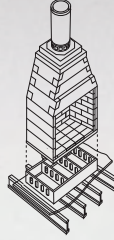
CONVENTIONAL/VENT FREE

- FireRock's traditional model
- Angled back wall for better heat reflection
- Accommodates FireRock masonry or approved metal chimney system
- Sizes: 30", 36", 42", 48", 60" and 72"
- Certifications: UL 127 and ANSI 221.50*



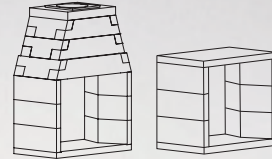
RUMFORD

- Taller opening allows for a larger fire and greater heat reflection
- Great for homes with high ceilings
- Accommodates FireRock masonry or approved metal chimney system
- Sizes: 30", 36", 42" and 48"
- Certifications: UL 127*



LITEROCK

- Allows for a wood burning fireplace on any combustible floor system
- Great for remodeling projects or second floor fireplace applications
- Requires the use of an approved metal chimney
- Sizes: 30", 36" and 42"
- Certifications: UL 127*



SEE-THROUGH/VENT FREE

- Best see-through fireplace design on the market
- Architectural beauty of a fireplace in two rooms with only one flue
- Accommodates FireRock masonry or approved metal chimney system
- Sizes: 30", 36", 42" and 48"
- Certifications: UL 127 and ANSI 221.50*

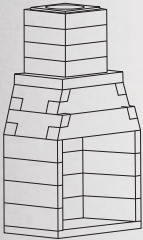


B-VENT

- Perfect for remodeling projects
- Can be installed on a combustible floor
- No glass doors required
- Gas only
- Sizes: 30", 36", 42" and 48"
- Certifications: UL 127 and ANSI 221.50*

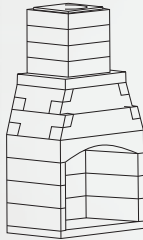
Outdoor Products

THE BEST WAY TO ENHANCE YOUR OUTDOOR LIFE STYLE



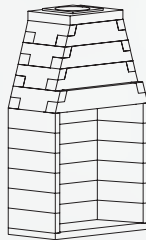
OUTDOOR FIREPLACE

- FireRock's traditional outdoor fireplace
- Firebox and chimney deliver on a single pallet
- Sizes: 30", 36" and 42"



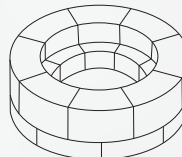
ARCHED FRONT OUTDOOR FIREPLACE

- FireRock's traditional outdoor fireplace with a Tuscan arch
- Firebox and chimney deliver on a single pallet
- Sizes: 30", 36" and 42"



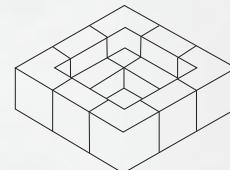
OUTDOOR RUMFORD

- Taller opening allows for a larger fire and greater heat reflection
- Adds a Victorian touch to your outdoor room
- Sizes: 30", 36" and 42"



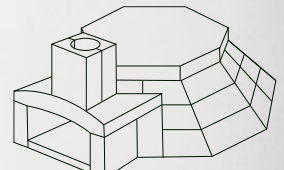
EMBERPIT ROUND

- Modular design with no single component over 60 lbs.
- Riser kit(s) available as add-on(s) for increased height
- Size: 44"



EMBERPIT SQUARE

- Modular design with no single component over 60 lbs.
- Extension blocks available to add length and width for custom sizes
- Sizes: 36", 48", 60" and 72"



WOOD-FIRED OUTDOOR OVEN

- Features oversized 40" oven floor.
- Diagonal oven floor lined with clay firebrick
- Stainless steel door included
- Door Size: 17" Wide



3620 Avenue C
Birmingham, AL 35064

Phone: 205.639.5000

1.888.876.1025

Fax: 205.639.5015

info@firerock.us



*Testing performed by: Warnock Hersey Labs and PFS Testing